

TABELLA RIEPILOGO PILASTRI

ORDINE		Fondazione	I	II	III		IV		V
Pilastro	Sezione		Armatura			Sezione	Armatura	Sezione	Armatura
1	30x80	A	B	B	C	30x70	D'	30x60	D''
2	80x30	B	C	C	C	70x30	D'	60x30	D''
3	80x30	B	C	C	C	70x30	C1''	60x30	D''
4	80x30	B	C	C	C	70x30	C1''	60x30	D''
5	80x30	B	C	C	C	70x30	C1''	60x30	D''
6	30x80	A	B	B	C	30x70	D'	30x60	D''
7	30x80	B	C	C	C	30x70	C1'	30x60	D''
8	30x80	B	C	C	C	30x70	D'	30x60	D''
9	30x80	B	C	C	C	30x70	D'	30x60	D''
10	30x80	B	C	C	C	30x70	D'	30x60	D''
11	80x30	B	C	C	C	70x30	D'	60x30	D''
12	30x80	A	B	B	C	30x70	D'	30x60	D''
13	30x80	A	B	B	C	30x70	D'	30x60	D''
14	80x30	B	C	C	C	70x30	C1''	60x30	D''
15	80x30	B	C	C	C	70x30	C1''	60x30	D''
16	80x30	B	B	B	B	70x30	C1''	60x30	C1''
17	30x80	B	B	B	B	30x70	C1''	30x60	C1''
18	30x80	A	B	B	C	30x70	D'	30x60	D''
19	80x30	A	B	B	C	70x30	D'	60x30	D''
20	80x30	B	C	C	C	70x30	C1''	60x30	D''
21	30x80	A	B	B	C	30x70	D'	30x60	D''

SEZIONE LONGITUDINALE

DISTINTA DELLE ARMATURE

Scala 1:20

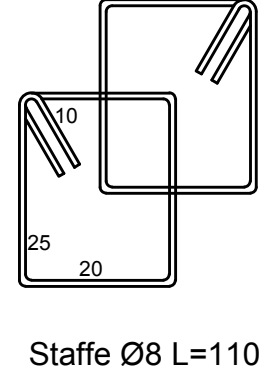
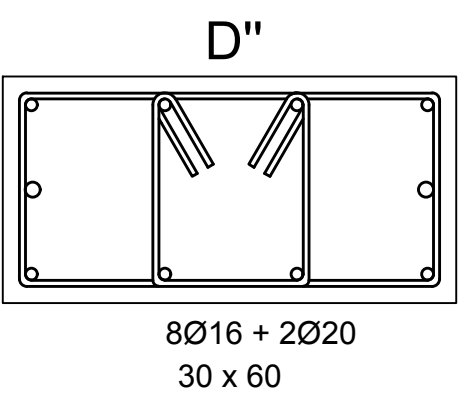
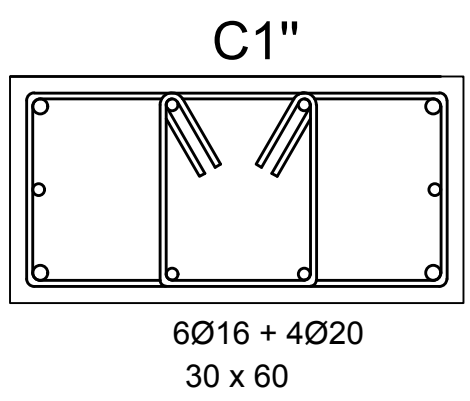
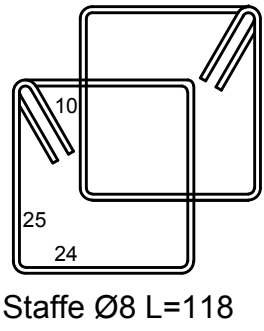
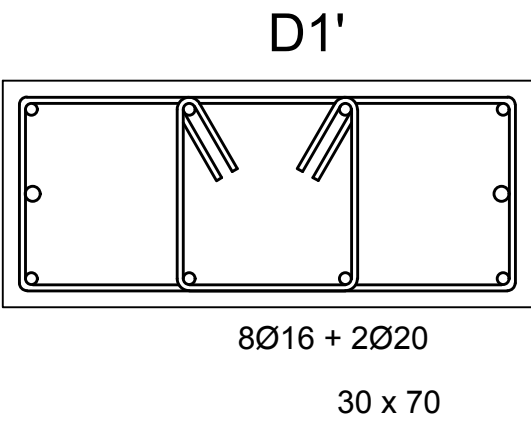
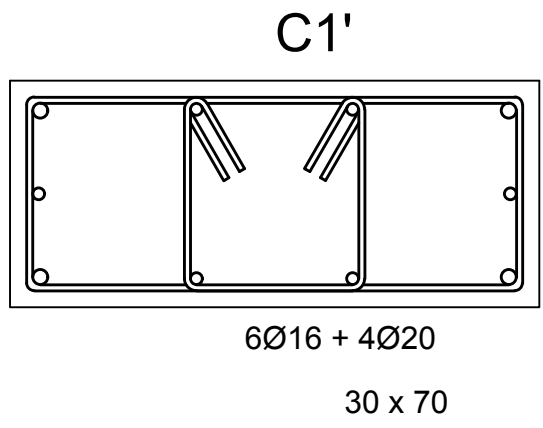
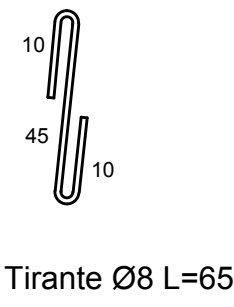
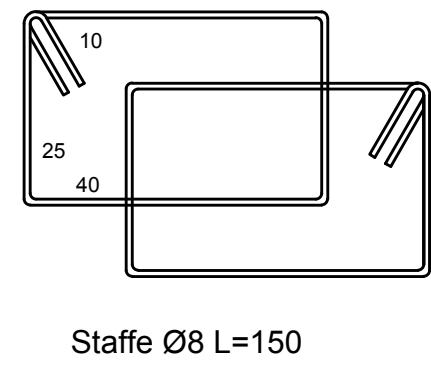
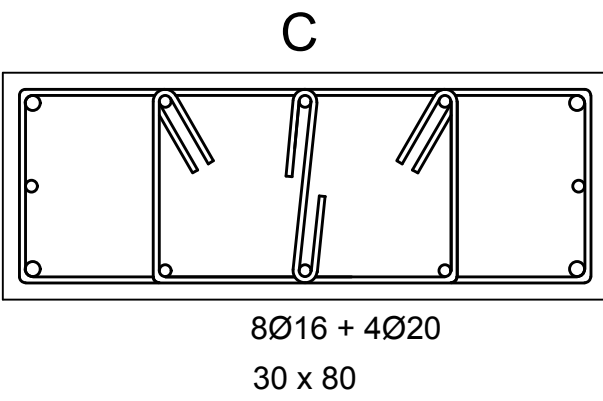
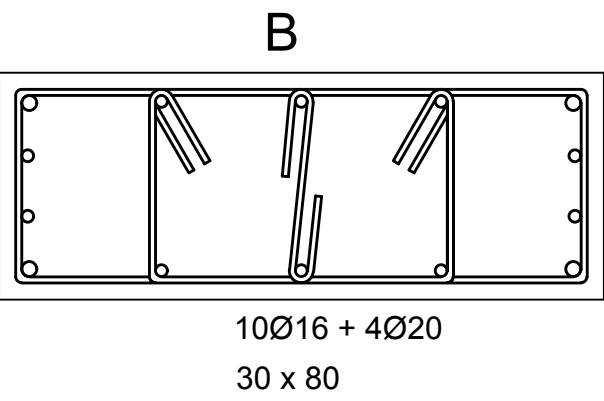
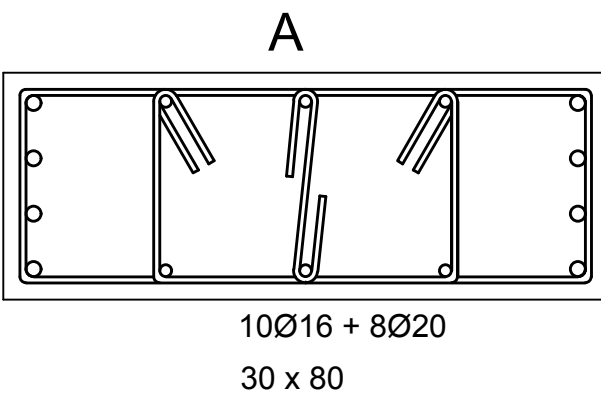
V ORDINE

IV ORDINE

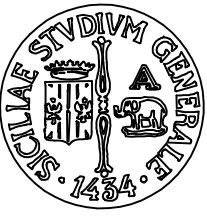
III ORDINE

SEZIONI TRASVERSALI TIPO

Scala 1:20



UNIVERSITA' DEGLI STUDI DI CATANIA



Dipartimento di
Ingegneria Civile e Architettura

CORSO DI PROGETTO DI STRUTTURE IN ZONA SISMICA

A.A. 2016/17

Modulo A - Prof. Ing. Aurelio Gheresi

PROGETTO DI UN EDIFICIO
IN C.A. IN ZONA SISMICA

- ☐ Tav. 1 Architettonico Scala 1:50
- ☐ Tav. 2 Tetto Scala 1:50
- ☐ Tav. 3 Carpenteria piano tipo Scala 1:50
- ☐ Tav. 4 Carpenteria mansarda Scala 1:50
- ☐ Tav. 5 Trave 101 e Dettagli Scala 1:50-1:10
- ☒ Tav. 6 Pilastro 1 e Dettagli Scala 1:20

MATERIALI UTILIZZATI

Calcestruzzo: C25/30

Acciaio: B450C

Docente
Prof. Ing. Aurelio Gheresi

Studente
Veronica Zakher
O49/000168